

PQ Labs
Multi-Touch Screen G² Overlay

Demo Manual 1.0

Jet Engine

Disclaimer

The information in this document is subject to change without notice. PQ Labs Inc. makes no representations or warranties with respect to the contents hereof. PQ Labs Inc. reserves the right to revise this publication and to make changes from time to time in the content hereof without obligation of PQ Labs Inc. to notify any person of such revisions or changes.

Part 1: Introduction

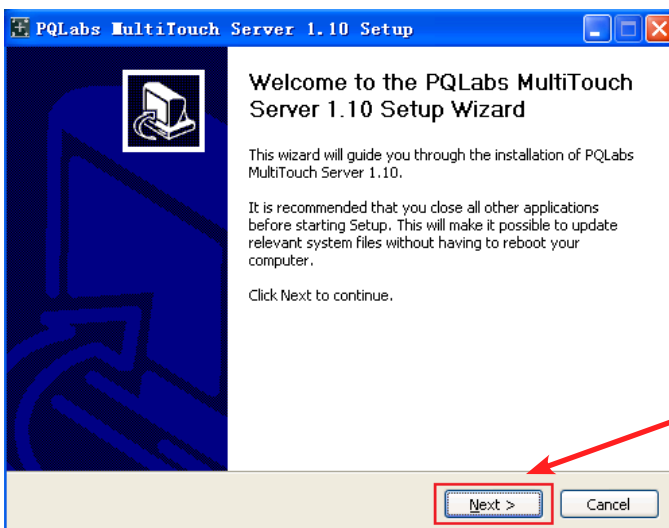
Thanks for choosing PQ Labs Multi-Touch G² Overlay. This product turns your display, such as a plasma or LCD, into a multi-touch display. You can control a computer application simply by touching the screen with your fingers.

This manual will provide a brief explanation of using Jet Engine on PQ Labs Multi-Touch G² Overlay.

Part 2: Software Installation

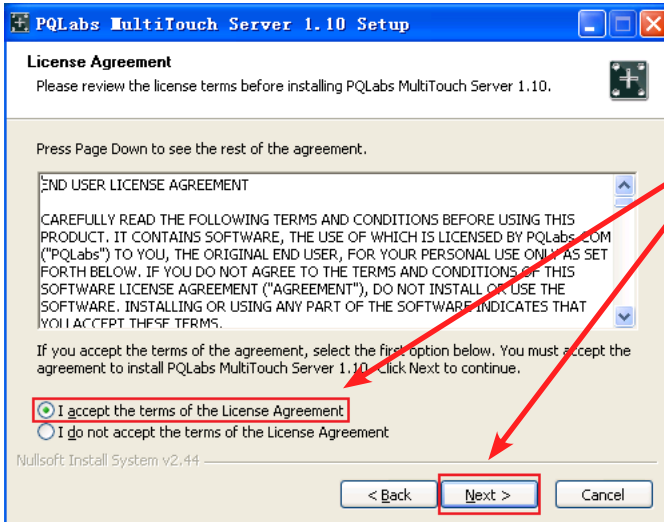
A. Server Installation

After installing the overlay as instructed in Multi-Touch G² Overlay User Manual, please install PQ Labs Multi Touch Server first.

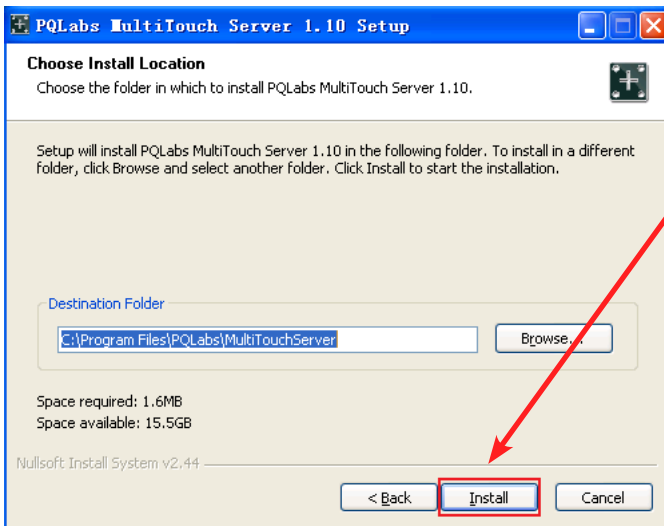


Open PQ Labs Multi Touch Server program from CD- Rom. Download Available from <http://www.pqlabs.com/support.html>

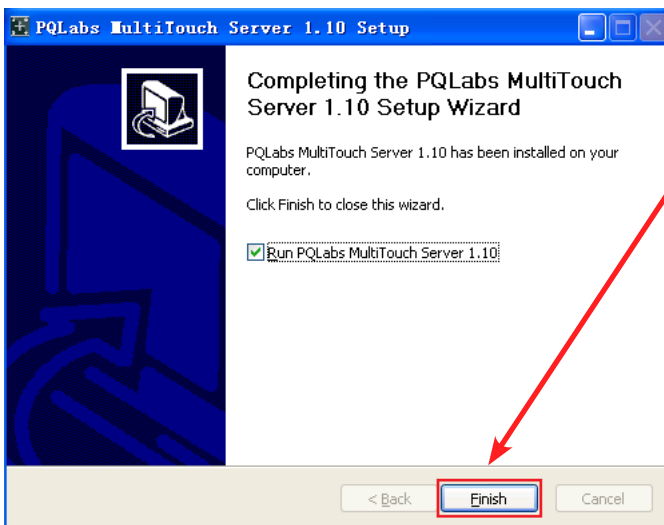
Double click on PQ Labs server program to start the installation wizard. Click "Next" in the welcome window to continue.



Read Licenses agreement, choose "I accept" option and click "Next" to accept terms.

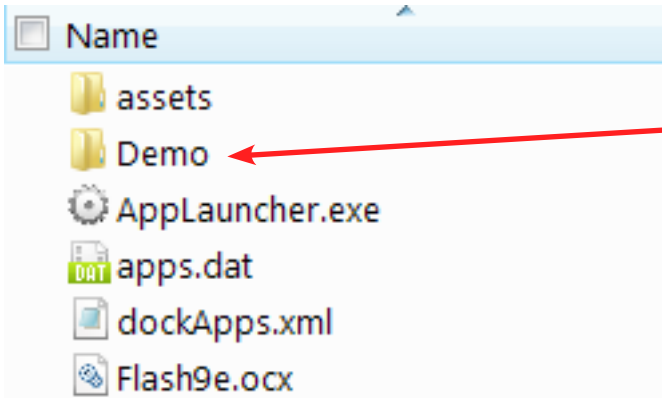


Choose where you want the program to be installed and click "Install" to continue.

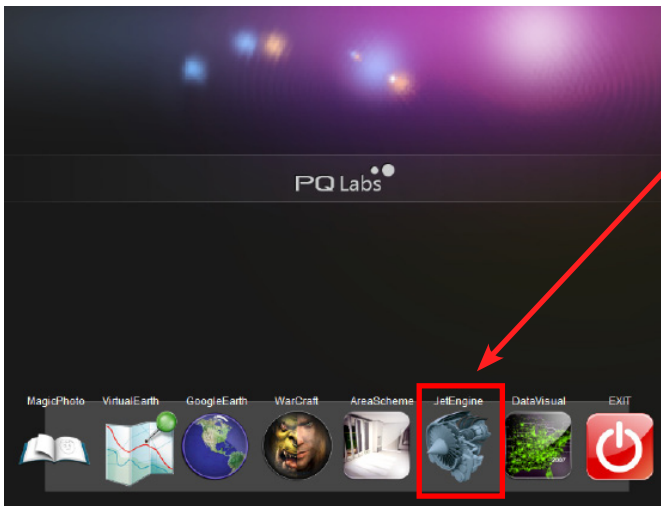


When setup is completed, click "Finish" to finish installation.

B. Application Installation



After PQ Labs Application Launcher and Jet Engine application download, move Jet Engine application to “Demo\Quest3D” folder in PQ Labs Application Launcher package



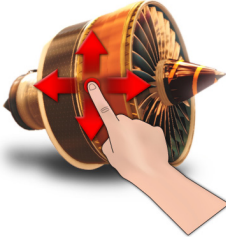

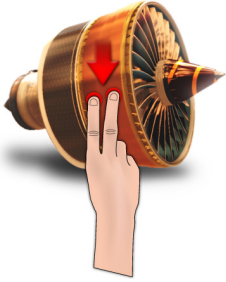
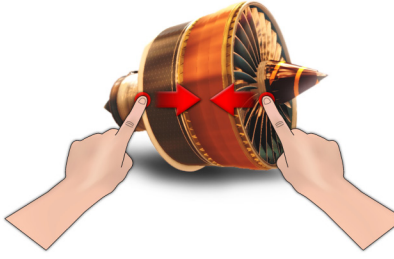
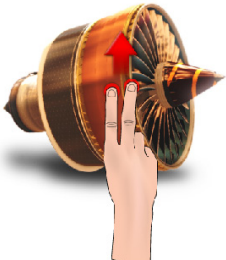
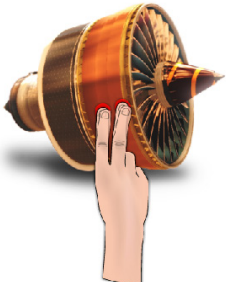
Run Jet Engine from PQ Labs Application Launcher and make sure PQ Multi-Touch Server is running.

Part 3: Demo Gesture Guide

To get started, simply position and move your finger(s), note what happens in the viewer. By moving your finger(s), you can:

- Drag the view in any direction
- Zoom in or out

The following gestures control the Jet Engine application:

Command	Gesture	
Move the view	Move a finger in any desired direction	
Zoom In	Move two fingers apart	
	Move two fingers down	
Zoom Out	Move two fingers close together	
	Move two fingers up	
Exit	Double click with two fingers	

Part 4: Support

For Technical Support, please email support@pqlabs.com

For Business Inquiry or Suggestions, please email contact@pqlabs.com

Thanks for choosing PQ Labs products!