



**PQ Labs**  
**Multi-Touch Screen G<sup>2</sup> Overlay**

*Demo Manual 1.0*

Google Earth

## Disclaimer

The information in this document is subject to change without notice. PQ Labs Inc. makes no representations or warranties with respect to the contents hereof. PQ Labs Inc. reserves the right to revise this publication and to make changes from time to time in the content hereof without obligation of PQ Labs Inc. to notify any person of such revisions or changes.

## Part 1: Introduction

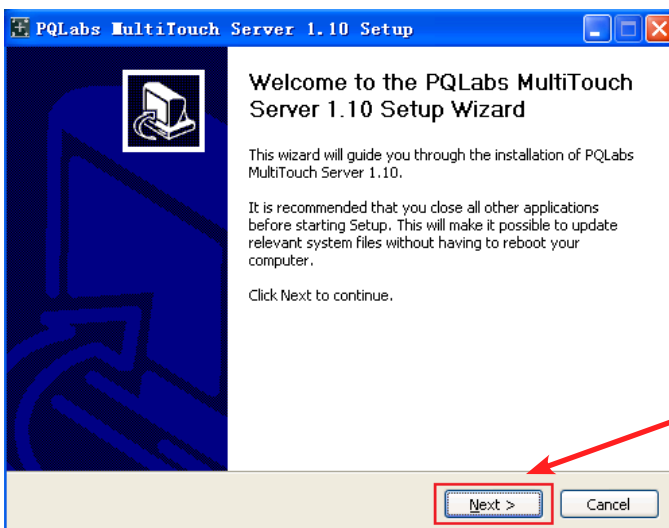
Thanks for choosing PQ Labs Multi-Touch G<sup>2</sup> Overlay. This product turns your display, such as a plasma or LCD, into a multi-touch display. You can control a computer application simply by touching the screen with your fingers.

This manual will provide a brief explanation of using Google Earth on PQ Labs Multi-Touch G<sup>2</sup> Overlay.

## Part 2: Software Installation

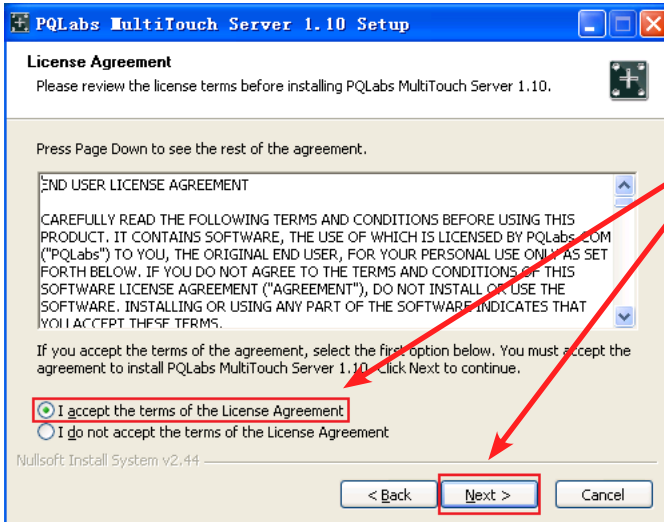
### A. Server Installation

After installing the overlay as instructed in Multi-Touch G<sup>2</sup> Overlay User Manual, please install PQ Labs Multi Touch Server first.

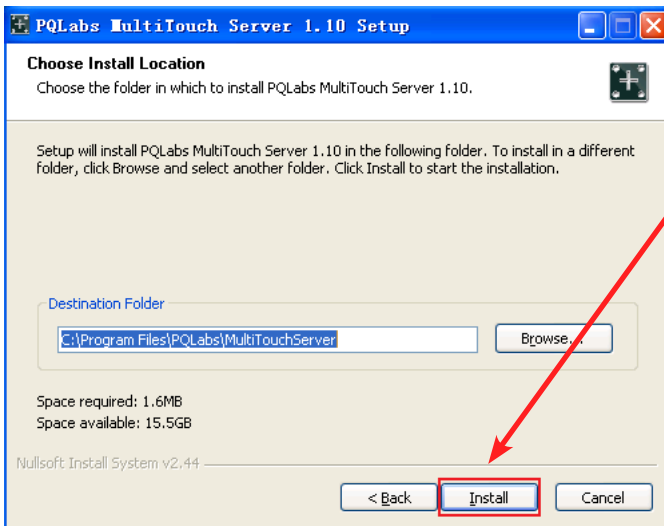


Open PQ Labs Multi Touch Server program from CD- Rom. Download Available from <http://www.pqlabs.com/support.html>

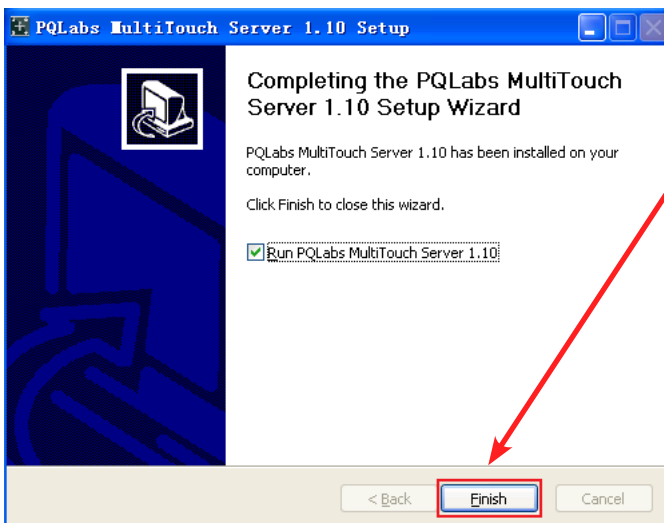
Double click on PQ Labs server program to start the installation wizard. Click "Next" in the welcome window to continue.



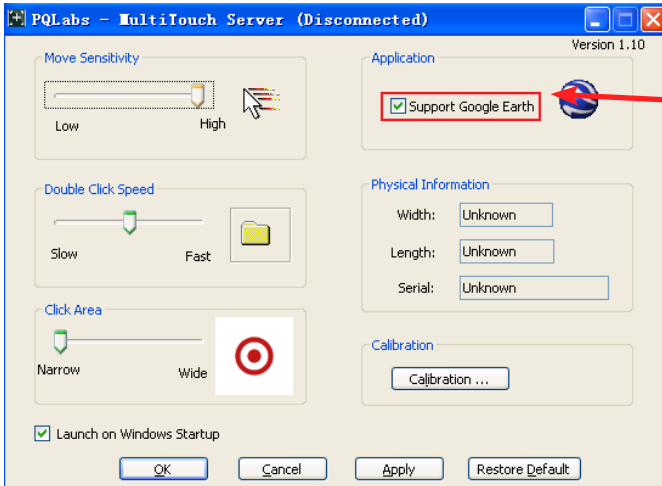
Read Licenses agreement, choose "I accept" option and click "Next" to accept terms.



Choose where you want the program to be installed and click "Install" to continue.



When setup is completed, click "Finish" to finish installation.



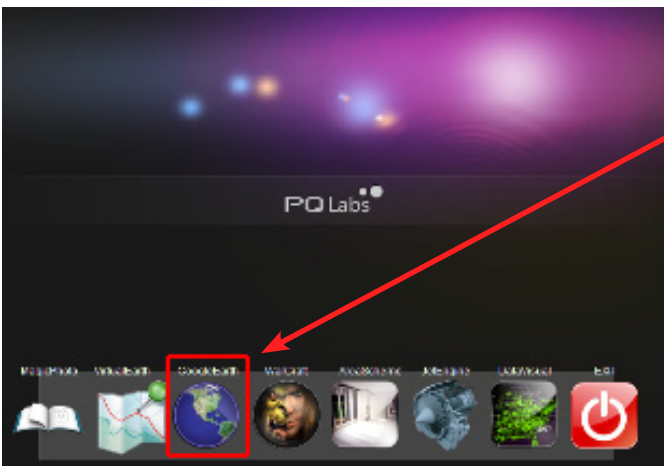
After installation completed, open PQ Multi-Touch server and keep the "Support Google Earth" option selected.

## B. Application Installation

After installing PQ Labs Multi-Touch Server, please download PQ Labs Application Launcher (Download available from [http://www.pqlabs.com/download/mt\\_demos.zip](http://www.pqlabs.com/download/mt_demos.zip)) and install Google Earth program. Then run Google Earth from PQ Labs Application Launcher.



Download and install Google Earth program from <http://earth.google.com>






After Google Earth installed, run Google Earth program from PQ Labs Application Launcher and make sure PQ Multi-Touch server is running.

## Part 3: Demo Gesture Guide

To get started navigating with your finger(s), simply position the finger(s), in the middle of the 3D viewer (image of the earth), move your finger(s) and note what happens in the viewer. By moving your finger(s), you can:

- Drag the view in any direction
- Zoom in or out
- Tilt the view
- Rotate the view

The following gestures control the Google Earth application:

Command	Gesture	
Move the view	Move a finger in any desired direction	
Zoom In	Move two fingers apart	
	Move two fingers down	

Zoom Out

Move two fingers close together



Move two fingers up



Tilt the view

Move five fingers up or down



Rotate the view

Keeping a finger in place, move the other finger in an arced direction right or left.



## Part 4: Support

For Technical Support, please email [support@pqlabs.com](mailto:support@pqlabs.com)

For Business Inquiry or Suggestions, please email [contact@pqlabs.com](mailto:contact@pqlabs.com)

Thanks for choosing PQ Labs products!